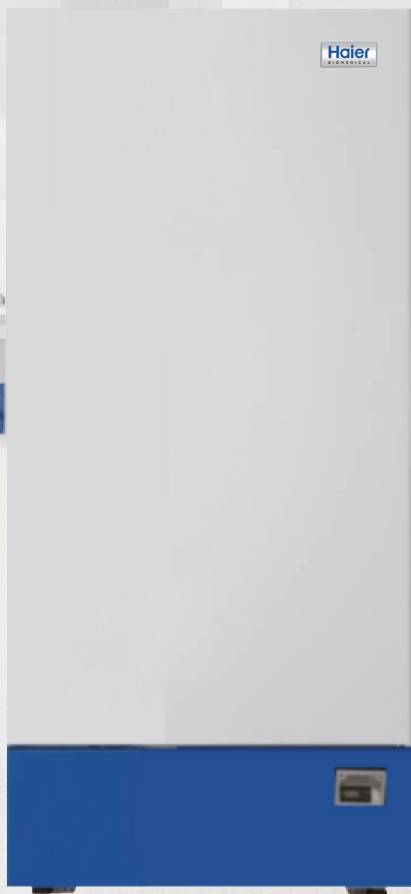


Large Capacity -30°C Biomedical Freezer



DW-30L818

Typical Installation and Application

For use in blood banks, hospitals, research institutions, electronics, chemical and other industries, for the preservation of plasma and biological products and cryogenic test of components and materials.



Energy efficient hydrocarbon (HC) refrigeration system

Optimised refrigeration system, utilising high-efficiency HC compressor significantly reduces energy consumption.



Greener by design

HC refrigerants are natural non-toxic and more environmentally friendly than HFC refrigerants. This alongside the HC compressor technology and LBA foamed polyurethane insulation layer, make this unit greener and in-line with European ROHS directives and environmental protection guidelines.



Large capacity, superior uniformity

Built-in evaporator for faster cooling speed and uniform temperature throughout the cabinet, ± 3 C. Large internal space with adjustable shelves for flexible configuration.



Low noise

Optimised system and cabinet design ensures low noise emissions, less than 44dB.





Easy to clean and corrosion resistant

Electric zinc plate powder sprayed internal liner and large round corner design and coated steel plate exterior design ensure reliable corrosion prevention which is easy to clean.

Ergonomic handle design: easy access to storage space, built in lock and padlock features.

4 multi-directional casters and 2 lockable feet make it easy to move, level and lock in place.



Microcomputer electronic thermostat, LCD digital display of inside temperature, with 0.1 C display accuracy.



Double seal design provides better insulation and saves energy.

Inner doors prevent rapid loss of cold air, saving energy and reducing temperature fluctuations.



Flexible internal storage

Equipped with 5 plastic coated steel wire shelves with optional stainless steel shelves, which are adjustable to meet the different requirements of users.



Microprocessor control system

- Microcomputer electronic thermostat, LCD temperature display, display precision 0.1 °C, inside temperature set point -10~-30 °C (adjustable).
- Multiple alarm functions including high temperature alarm, low temperature alarm, sensor fault alarm, power off alarm, open door alarm, high ambient temperature alarm.
- Sound and light alarm mode can be connected to a remote alarm interface.
- Battery backup alarm function operates continuously for >24hr in the event of a power outage.
- Standard configuration: RS485 port.
- Optional USB interface, printer and temperature logger.



Superior thermal insulation performance

70mm super thick insulation layer design, double door seals plus three inner doors, superior thermal insulation and energy saving effect.



Porthole

Portholes as standard, allows for independent testing of cabinet temperature.



Security lock

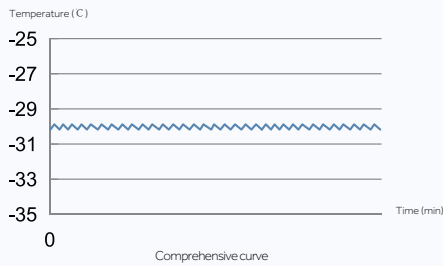
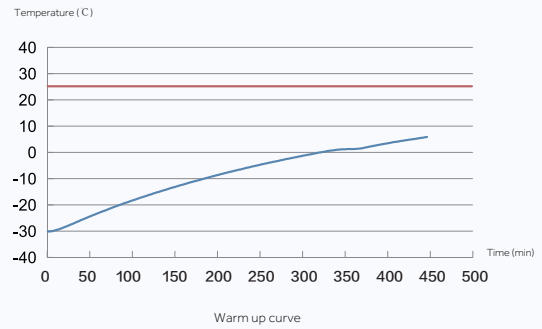
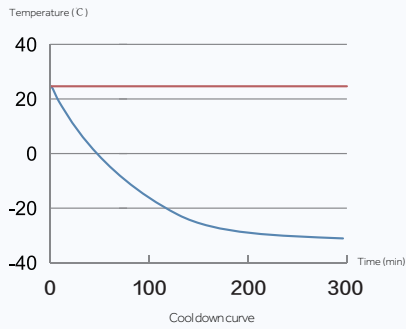
Built-in lock and padlock available, convenient and safe for multiple users or independent management as needed.



Chart recorder

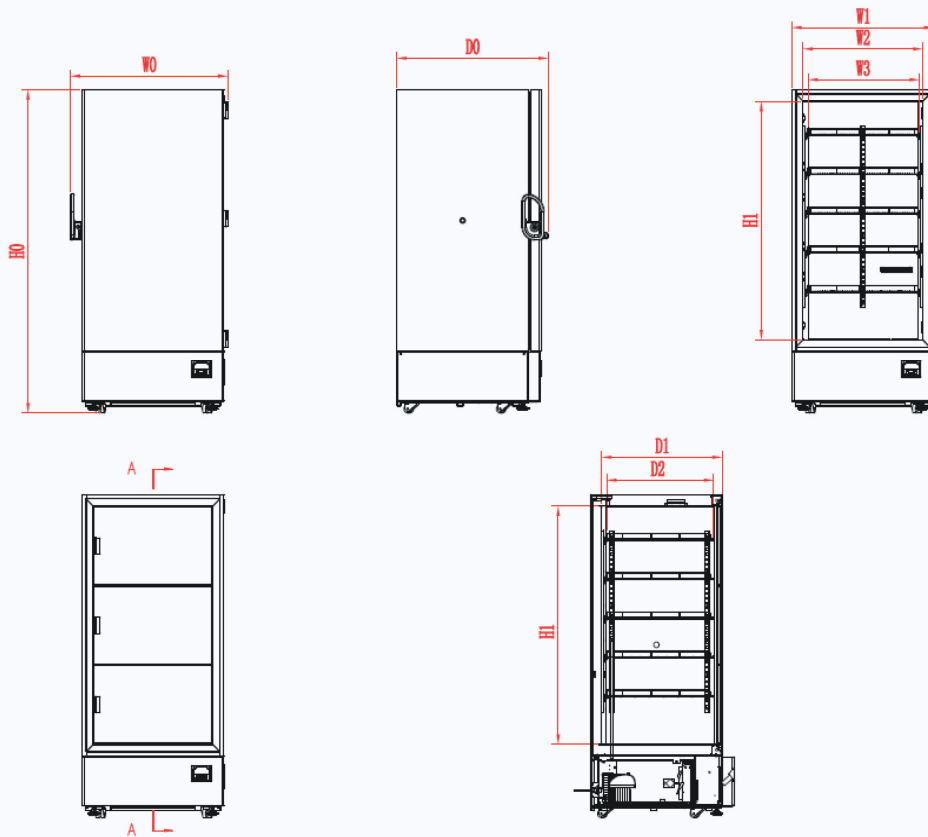
Optional chart recorder for temperature records.

Typical Performance Characteristics in 25 °C Ambient: DW-30L818



— Ambient Temp.
— Cabinet Temp.

Product Dimension Drawing



Remark:
 W0: Overall Width
 W1: Freezer Width
 W2: Internal Width
 W3: Internal Shelf Width
 D0: Overall Depth
 D1: Internal Depth
 D2: Internal Shelf Depth
 H0: Overall Height
 H1: Internal Height

CODE MODEL	W0	W1	W2	W3	D0	D1	D2	H0	H1
DW-30L818	988mm	890mm	750mm	698mm	950mm	744mm	671mm	1979mm	1460mm



Model		DW-30L818	
Technical Data	Cabinet Type	Upright	
	Climate Class	4	
	Cooling Type	Direct cooling	
	Defrost Mode	Manual	
	Refrigerant	HC	
	Noise((dB(A))	44	
Performance	Cooling Performance(C)	-30	
	Temp Range(C)	-10--30 C (-35 C at 25 C Ambient Temperature)	
Control	Controller	Microprocessor	
	Display	LCD	
Electrical Data	Power Supply(V/HZ)	220~240/50	
	Power(W)	400	
	Electrical Current(A)	3.2	
	Capacity(L/Cu.Ft)	818/28.9	
Dimensions	Net/Gross Weight(approx)	(kg)	205/235
		(lbs)	463/529.1
	Interior Dimension(W*D*H)	(mm)	750×755×1460
		(in)	29.5*29.7*57.5
	Exterior Dimension(W*D*H)	(mm)	988x950x1979
		(in)	38.9*37.4*77.9
Alarm Functions	Remote Alarm	Y	
	High/Low Temp Alarm	Y	
	Power Failure Alarm	Y	
	Sensor Error Alarm	Y	
	Low Battery Alarm	N	
	High Ambient Temp Alarm	Y	
	Door Ajar Alarm	Y	
Accessories	Caster	Y	
	Foot	Y	
	Test Hole	Y (2)	
	Shelves/ Inner Doors	5/3	
	USB Interface	Optional	
	5V Power Supply Port	N	
	Temp Recorder	Optional	
	RS485 Port	Y	
Other	Certificate	CE	



Wolflabs

Wolf Laboratories Limited

www.wolflabs.co.uk

Tel: 01759 301142

Fax: 01759 301143

sales@wolflabs.co.uk



Use the above details to contact us if this literature doesn't answer all your questions.

Pricing on any accessories shown can be found by keying the part number into the search box on our website.

The specifications listed in this brochure are subject to change by the manufacturer and therefore cannot be guaranteed to be correct. If there are aspects of the specification that must be guaranteed, please provide these to our sales team so that details can be confirmed.

